



# Garware-Wall Ropes Ltd.

## Product Data Sheets

### Rope, Twine and Netting



**Insist on Garware quality!**



**Garware-Wall Ropes Ltd**  
Narrows Reach Business Center, Unit # 500,  
6102 North 9th Street, Tacoma, WA 98406  
Tel: (253) 564-0217 & Fax : (253) 564-0237  
[www.garwareropes.com](http://www.garwareropes.com)

09/2011



<b>Page</b>	<b>Contents</b>
3	Sapphire Braided Netting and Twine
4	Sapphire Twisted Netting and Twine
5	Olivene Netting and Twine
6	Leaded Olivene
7	Braided PE Garnet Netting and Twine
8	Twisted PE Garnet Netting and Twine
9	Twisted Nylon Netting and Twines
10	Braided Nylon Netting and Twines
11	Thor Netting and Twine
12	Maxiflex 3-Strand Blended Rope
13	PP 3-Strand Ropes
14	Nylon 3 Strand Ropes
15	Maxima 3 Strand Trawl Rope MTR3
16	Maxilon Braided PE Coated Trawl Ropes
17	Maxilon Braided PE Coated Trawl Ropes
18	Maxilon Braided PE Coated Trawl Ropes
19	MBR8
20	Hollow Braid PP
21	Crab Rope
22	Chaffing Ropes
23	Gangions
24	Bait Bags
25	EVA Floats
26	Maxima Purselines MPL
27	Seine Leadlines and Corklines
28	Gillnet Leadlines and Corklines

## **Insist on Garware quality!**



**Garware-Wall Ropes Ltd**  
Narrows Reach Business Center, Unit # 500,  
6102 North 9th Street, Tacoma, WA 98406  
Tel: (253) 564-0217 & Fax : (253) 564-0237  
[www.garwareropes.com](http://www.garwareropes.com)

Product Code: BSAP

# Braided Sapphire Netting and Twine



**Sapphire – Designed for speed...Built to Last**

Sapphire is our top of the line PE netting. Its superior strength allows downsizing of your twines. Less drag saves fuel. Sapphire is **STRONGER, LIGHTER, and SAVES FUEL.**

## SAPPHIRE Product Features:

Net makers can now rely on Sapphire netting while designing nets for demanding applications taking advantage of the following features:

Manufactured from **Specialized Polymers** that enhance performance for successful operations in demanding conditions.

Distinctive combination of **Highest Knot Breaking Length & Excellent Abrasion Resistance** delivers durability and strength ensuring undiminishing performance of the trawl voyage after voyage.

Ideal Twine Geometry results in lower operating costs and **excellent abrasion resistance.**

**Hydrodynamic** nets are easier to tow, reduce fuel consumption and improve resistance to wear and tear.

Braided twine having **Compact Construction** restricts mud penetration and provides lesser drag.

**Thermo Stabilized** for dimensional uniformity and stability of the meshes.

Added **reliability** on account of product tests at independent test laboratory in Europe and development of the design aided by close interaction with trawl makers.



Actual dia (in mm)	Runnage ft/lb	B.Str lbs	KBS lbs	KBL m
1.2	1,223	130	176	65,600
1.7	835	176	243	61,600
2.1	559	254	355	60,375
2.6	388	342	496	58,500
3.1	283	485	659	56,810
3.5	231	562	772	54,250
3.8	186	717	970	55,000
4.2	151	783	1,147	52,520
5.0	112	1,200	1,614	54,900
6.0	88	1,544	2,150	57,525
6.7	67	1,764	2,426	49,500
7.2	55	1,985	2,977	49,950

## Insist on Garware quality!

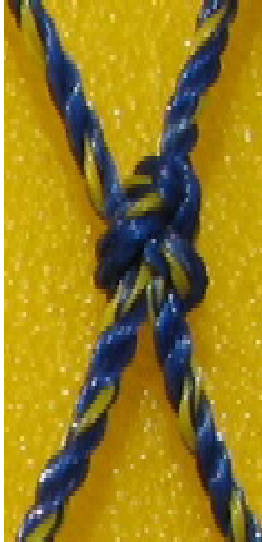


**Garware-Wall Ropes Ltd**  
Narrows Reach Business Center, Unit # 500,  
6102 North 9th Street, Tacoma, WA 98406  
Tel: (253) 564-0217 & Fax : (253) 564-0237  
[www.garwareropes.com](http://www.garwareropes.com)

Product Code: TSAP



# Twisted Sapphire Netting and Twine



Constrn	US Size #	Runnage ft/lb	KBS lbs	KBL in m
380X3X3	5	3,580	57	62,400
380X4X3	7	2,648	75	60,350
380X5X3	9	2,051	93	57,750
380X6X3	12	1,678	112	57,375
380X7X3	15	1,441	132	57,960
380X8X3		1,260	141	54,080
380X9X3		0	0	
380X10X3		1,007	185	56,700
380x12x3		841	205	52,452
380x14x3		719	243	53,020
380x15x3		0	0	
380x16x3		644	287	56,160
380x18x3		573	320	55,680
380x20x3		503	353	53,920
380x30x3		336	529	54,000
380x40x3		246	717	53,625
380x50x3		197	838	50,160
<b>TWISTED SAPPHIRE SPECS - 280 D</b>				
280X5X3	6	2,938	68	

This tough twisted version of our **Heavy Duty Braided Sapphire** is our **Fuel Saving** solution for the small trawler. It is sweeping through the Gulf of Mexico shrimp trawl fleet, saving fuel and reducing maintenance costs.

## Insist on Garware quality!



**Garware-Wall Ropes Ltd**  
Narrows Reach Business Center, Unit # 500,  
6102 North 9th Street, Tacoma, WA 98406  
Tel: (253) 564-0217 & Fax : (253) 564-0237  
[www.garwareropes.com](http://www.garwareropes.com)

Product Code: BOL

# Olivene Netting & Twine



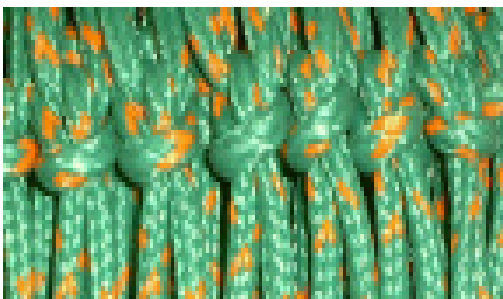
Nominal dia	Runnage	Breaking Strength	KBS	KBL
(in mm)	ft/lb	lbs	lbs	m
1.2	1,193	117	139	50,400
2.0	552	232	309	51,800
2.5	428	287	386	50,225
3.0	380	342	463	53,550
3.5	283	463	606	52,250
4.0	231	529	728	51,150
4.5	178	662	970	52,360
5.0	149	778	1,153	52,300
5.5	125	999	1,455	55,440
6.0	89	1,378	1,985	54,000
7.0	72	1,544	2,205	48,000
8.0	55	1,929	2,867	48,100



## The Workhorse!

Higher strength PE than Garnet, combined with exceptional durability at an affordable price.

Compact twine with a tight cover to reduce mud & sand penetration.



Manufactured from Olivene MK3 braided twine having bonded filaments in the cover for restricting mud penetration and mesh size stability.

Improved Abrasion Resistance and high Knot Breaking Strength as compared to conventional HDPE Braided Nettings.

Compact Construction of the Olivene MK3 Nettings improves the performance in severe conditions.

Manufactured from specialized raw material with high molecular length to increase effectiveness in operations.

Thermo Stabilized for dimensional uniformity and stability of the meshes.

Unique Identification: Green + 2 Orange Tracer Yarns in Cover

## Insist on Garware quality!



**Garware-Wall Ropes Ltd**  
Narrows Reach Business Center, Unit # 500,  
6102 North 9th Street, Tacoma, WA 98406  
Tel: (253) 564-0217 & Fax : (253) 564-0237  
[www.garwareropes.com](http://www.garwareropes.com)

Product Code: Leaded Olivene



# Leaded Olivene



Same Olivene Quality

**Leaded Netting allows you to eliminate use of a traditional leadline.**

Available now as a custom order.

Allow 90 days for delivery.

Can be made in a variety of depths, lengths and twine sizes.

## Insist on Garware quality!



**Garware-Wall Ropes Ltd**  
Narrows Reach Business Center, Unit # 500,  
6102 North 9th Street, Tacoma, WA 98406  
Tel: (253) 564-0217 & Fax : (253) 564-0237  
[www.garwareropes.com](http://www.garwareropes.com)

Product Code: BPE

# Braided PE Garnet Netting and Twine



## High Density Polyethylene

Sustained Research & Development efforts have resulted in GWRL's growth into a world's leading manufacturer of Synthetic Cordages and Nets.

### Garfil Nettings are made from

- o High Density Polyethylene (HDPE)
- o Nylon Multifilament
- o Nylon Monofilament

### Garfil HDPE Nettings are available in following varieties:

- o Braided Nettings - Single & Double
- o Twisted Nettings – Single & Double

### Braided and Twisted Nettings - Product Features

- o Conform to industry's strictest quality standards
- o High abrasion resistance
- o High mesh breaking strength
- o Uniform mesh size and tight knots
- o Good dimensional stability
- o Smooth fiber surface
- o Substantial production capacity ensuring quick deliveries of various types and sizes of nets.

Nominal dia (mm)	Runnage m/kg	Runnage ft/lb	Breaking Strength Kgf	Breaking Strength lbf
1.0	1100	1641	34	75
1.2	1000	1492	38	84
1.5	800	1193	45	99
1.8	615	917	58	128
2.0	520	776	70	154
2.5	405	604	86	190
3.0	281	419	120	265
3.5	225	336	150	331
4.0	190	283	175	386
4.5	140	209	238	525
5.0	129	192	240	529
6.0	89	133	380	838
8.0	34	51	700	1544

All Garware Garnet netting is made of Garnet twine, our standard braided PE product for everyday economical use.

## Insist on Garware quality!



**Garware-Wall Ropes Ltd**  
Narrows Reach Business Center, Unit # 500,  
6102 North 9th Street, Tacoma, WA 98406  
Tel: (253) 564-0217 & Fax : (253) 564-0237  
[www.garwareropes.com](http://www.garwareropes.com)



# Twisted PE Garnet Netting and Twine



High Density Polyethylene

Sustained Research & Development efforts have resulted in GWRL's growth into a world's leading manufacturer of Synthetic Cordages and Nets.

Garfil Nettings are made from

- o High Density Polyethylene (HDPE)
- o Nylon Multifilament
- o Nylon Monofilament

Garfil HDPE Nettings are available in following varieties:

- o Braided Nettings - Single & Double
- o Twisted Nettings – Single & Double

**Braided and Twisted Nettings - Product Features**

- o Conform to industry's strictest quality standards
- o High abrasion resistance
- o High mesh breaking strength
- o Uniform mesh size and tight knots
- o Good dimensional stability
- o Smooth fiber surface
- o Substantial production capacity ensuring quick deliveries of various types and sizes of nets.

Economical netting for every day non critical applications.

SR. NO.	CONSTRUCTION	SIZE NO. #	RUNNAGE m/kg	RUNNAGE ft/lb	BREAKING STRENGTH lbs
1	380 DEN/6 PLY	-	3450	5146	23.6
2	380 DEN/9 PLY	6	2300	3431	35.5
3	380 DEN/12 PLY	7	1688	2518	46.1
4	380 DEN/15 PLY	9	1350	2014	56.9
5	380 DEN/18 PLY	12	1125	1678	67.3
6	380 DEN/21 PLY	15	966	1441	78.1
7	380 DEN/24 PLY	-	845	1260	88.2
8	380 DEN/27 PLY	18	752	1122	98.1
9	380 DEN/30 PLY	-	675	1007	108.0
10	380 DEN/36 PLY	21	564	841	128.1
11	380 DEN/42 PLY	24	482	719	147.7
12	380 DEN/45 PLY	-	450	671	158.5
13	380 DEN/48 PLY	30	432	644	167.8
14	380 DEN/54 PLY	36	384	573	189.2
15	380 DEN/60 PLY	42	337	503	220.5
16	380 DEN/90 PLY	60	225	336	330.8
17	380 DEN / 108 PLY	72	187	279	374.9
18	380 DEN/120 PLY	-	165	246	419.0
19	380 DEN/150 PLY	-	132	197	507.2
20	380 DEN / 180 PLY	96	110	164	573.3

## Insist on Garware quality!



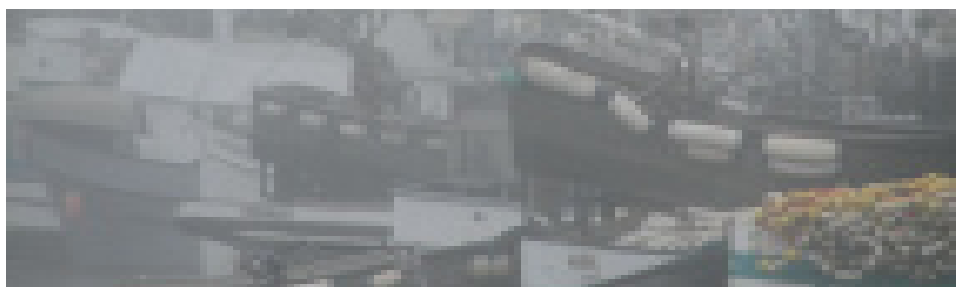
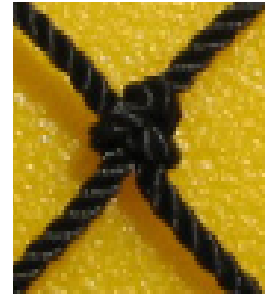
**Garware-Wall Ropes Ltd**  
 Narrows Reach Business Center, Unit # 500,  
 6102 North 9th Street, Tacoma, WA 98406  
 Tel: (253) 564-0217 & Fax : (253) 564-0237  
[www.garwareropes.com](http://www.garwareropes.com)

Product Code: TWN Y

# Twisted Nylon Netting and Twines



Nylon Twisted Twine						
Basic Denier	Construction	Size #	Ft/Lb	Breaking Strength (lbs)	Spools/box	Weight /box (lbs)
210	6 PLY	139	10608	14.55	12	12
210	9 PLY	208	7043	21.83	12	12
210	12 PLY	277	5051	41.90	12	12
210	15 PLY	6	4038	50.72	12	12
210	18 PLY	7	3292	61.74	12	12
210	21 PLY	8	2837	50.94	12	12
210	24 PLY	9	2425	83.79	12	12
210	27 PLY	-	2222	94.82	12	12
210	30 PLY	12	1957	105.84	12	12
210	36 PLY	15	1603	125.69	12	12
210	45 PLY	-	1316	147.74	12	12
210	48 PLY	18	1178	169.79	12	12
210	54 PLY	-	1023	189.63	12	12
210	60 PLY	21	943	209.48	12	12
210	72 PLY	24	786	253.58	12	12
210	84 PLY	30	662	295.47	12	12
210	90 PLY	-	626	317.52	12	12
210	96 PLY	36	556	339.57	12	12
210	108 PLY	42	519	372.65	12	24
210	120 PLY	-	482	401.31	12	24
210	132 PLY	48	430	429.98	12	24
210	144 PLY	54	388	467.46	12	24
210	168 PLY	60	328	557.87	12	24
210	192 PLY	72	291	637.25	12	24
210	234 PLY	84	234	661.50	12	24
210	276 PLY	96	206	932.72	12	24
210	336 PLY	-	164	1056.20	12	24



Available:  
White  
Dyed  
Bonded  
Perma Tar

## Insist on Garware quality!



**Garware-Wall Ropes Ltd**  
Narrows Reach Business Center, Unit # 500,  
6102 North 9th Street, Tacoma, WA 98406  
Tel: (253) 564-0217 & Fax : (253) 564-0237  
[www.garwareropes.com](http://www.garwareropes.com)

Product Code: BNY



# Braided Nylon Netting and Twines

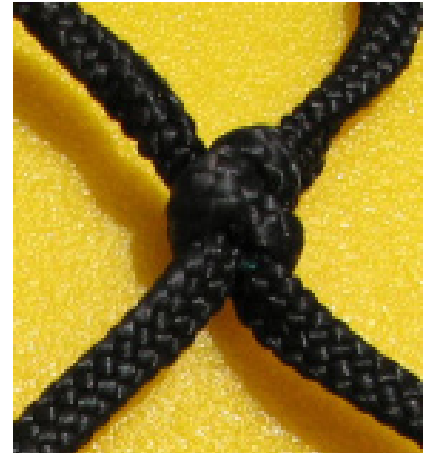
High tenacity braided nylon for best abrasion resistance

## 8 Carrier (Regular Braid)

Construction	SIZE	Ft/Lb	BR. STRENGTH	Spools/Box	WEIGHT/ BOX (Lbs)
210/3x8	12	2,387	66	25	25
210/4x8	15	1,903	90	25	25
210/5x8	16	1,448	110	25	25
210/6x8	18	1,162	165	25	25
210/8x8	21	835	199	25	25
210/10x8	24	677	243	25	25
210/12x8	30	597	298	25	25
210/14x8	36	503	242	25	25

## 16 Carrier (Round Braid)

Construction	SIZE	Ft/Lb	BR. STRENGTH	Spools/Box	WEIGHT/ BOX (Lbs)
210D/3X16	18	1176	128	25	25
210D/4X16	21	875	170	25	25
210D/5X16	24	720	220	25	25
210D/6X16	36	575	300	25	25
210D/8X16	42	430	385	25	25
210D/9X16	48	385	450	25	25
210D/10X16	54	350	500	10	50
210D/12X16	60	298	585	10	50
210D/14X16	72	260	715	10	50
210D/16X16	84	224	790	10	50
210D/18X16	96	190	935	10	50
210D/26X16	120	134	1,200	10	50
210D/30X16	132	116	1,375	10	50
210D/34X16	182	104	1,650	10	50
210D/42X16	240	85	2,090	10	50
210D/56X16	333	56	2,585	10	50



Available:  
White  
Dyed  
Bonded  
Perma Tar

Premium high tenacity braided nylon.  
For heavy duty applications in Tuna, Salmon, Squid or Herring seines.  
Perma Tar treatment gives the longest lasting protection.  
You can identify our nylon netting product by the Garware tape in the core of selvage twine.

Available in various colors and treatments depending on application.

## Insist on Garware quality!



Garware-Wall Ropes Ltd  
Narrows Reach Business Center, Unit # 500,  
6102 North 9th Street, Tacoma, WA 98406  
Tel: (253) 564-0217 & Fax : (253) 564-0237  
www.garwareropes.com

Product Code: THOR

# Thor Netting and Twine



## THOR TWISTED NETTINGS

SIZE NO.	PLY	RUNNAGE FEET/LB	KNOT BREAKING STRENGTH WET (LBS)
1	210/18	3246	81
2	210/24	2359	99
3	210/30	1840	125
4	210/36	1536	139
5	210/48	1165	172
6	210/60	963	229
7	210/72	798	275
8	210/96	575	365
9	210/120	455	453
10	210/180	298	638
11	210/288	198	983
12	210/384	122	913
13	210/480	103	1417
14	210/720	74	2248

## THOR BRAIDED NETTINGS

Twine dia. (mm)	Ply	Runnage (Ft/Lb)	BS (Lbs.) (Dry)	KBS (Lbs.) (Dry)
2	128	449.0	392	477
2.1	144	390.7	444	552
2.5	192	292.8	582	708
3	272	204.6	810	947
3.5	320	171.9	927	1144
4	384	142.6	1166	1389
5	544	100.6	1640	1879
6	704	76.7	2079	2424
7	832	67.1	2310	2640
8	1024	52.9	2842	3049

**Insist on Garware quality!**



**Garware-Wall Ropes Ltd**  
 Narrows Reach Business Center, Unit # 500,  
 6102 North 9th Street, Tacoma, WA 98406  
 Tel: (253) 564-0217 & Fax : (253) 564-0237  
[www.garwareropes.com](http://www.garwareropes.com)

Product Code: RMFX3USS



# Maxiflex

## 3-Strand Blended Rope



### Maxiflex

A special blend of high strength Maxima fibers and hi-tenacity Polyester multifilament yarns using our special in-house blending technology, places our Maxiflex Rope among the world's highest ranked Composite Rope categories.

The combination of a high strength to weight ratio, excellent abrasion properties, and complete suppleness and pliability enables the Maxiflex to be used wherever outstanding properties are required in a 3 strand rope.

Size (Dia.)		Size (Circ.)		Weight				Average Strength		Minimum Strength	
Inch	mm	Inch	mm	Lbs/100 Ft.	Lbs/Ft	Lbs/600 Ft.	Kg/100M	Lbs	Kg	Lbs	Kg
3/16"	4	1/2"		0.605	0.006	3.63	0.89	726	330		
1/4"	6	3/4"	18	1.4	0.014	8.4	2.1	1,760	800	1,584	720
5/16"	8	1"	24	2.4	0.024	14.4	3.6	2,970	1,350	2,673	1215
3/8"	9	1-1/8"	27	3.8	0.038	23.0	5.7	4,290	1,950	3,861	1755
7/16"	11	1-1/4"	33	4.9	0.049	29.2	7.3	5,280	2,400	4,752	2160
1/2"	12	1-1/2"	36	6.4	0.064	38.7	9.6	7,040	3,200	6,336	2880
9/16"	14	1-3/4"	42	8.4	0.084	50.3	12.5	9,240	4,200	8,316	3780
5/8"	16	2"	48	9.6	0.096	57.6	14.3	10,560	4,800	9,504	4320
11/16"	17	2-1/8"	51	12.2	0.122	73.2	18.2	12,210	5,550	10,989	4995
3/4"	18	2-1/4"	54	13.4	0.134	80.5	20.0	14,520	6,600	13,068	5940
7/8"	22	2-3/4"	66	17.7	0.177	105.9	26.3	18,700	8,500	16,830	7650
1"	24	3"	72	21.6	0.216	129.9	32.3	23,320	10,600	20,988	9540
1-1/8"	28	3-1/2"	84	24.9	0.249	149.1	37.0	26,400	12,000	23,760	10800
1-1/4"	30	3-3/4"	90	29.8	0.298	179.0	44.4	30,800	14,000	27,720	12600
1-5/16"	32	4"	96	34.4	0.344	206.2	51.2	34,980	15,900	31,482	14310
1-3/8"	34	4-1/8"	100	38.8	0.388	232.8	57.8	38,940	17,700	35,046	15930
1-1/2"	36	4-1/2"	108	41.9	0.419	251.7	62.5	41,800	19,000	37,620	17100
1-5/8"	40	5"	120	55.0	0.550	329.8	81.9	50,600	23,000	45,540	20700
1-3/4"	44	5-1/2"	132	63.9	0.639	383.4	95.2	59,400	27,000	53,460	24300
1-7/8"	46	5-3/4"	138	69.5	0.695	417.2	103.6	64,680	29,400	58,212	26460
2"	48	6"	144	75.4	0.754	452.6	112.4	70,400	32,000	63,360	28800
2-1/8"	52	6-1/2"	156	82.8	0.828	496.9	123.4	79,200	36,000	71,280	32400

### Product Features

- Specific gravity is equivalent to Nylon.
- Higher strength compared to Nylon.
- No loss of breaking strength in wet conditions.
- A multifilament cover ensures excellent abrasion resistance.
- Retains flexibility even after prolonged use.
- Controlled elongation and high energy absorption.
- The ropes can also be supplied as per OCIMF guidelines.

Product Name: Maxiflex  
 Product Code: RMFX3 (RMFX8 is also available)  
 Features: White rope with one blue and one yellow tracer yarn. Specific gravity is 1.2, so it is a sinking line. Excellent abrasion resistance. Dual fiber construction for optimum strength. Available in Heat set or regular. Low stretch.

Uses: Net frame ropes, small boat rigging lines.

## Insist on Garware quality!



**Garware-Wall Ropes Ltd**  
 Narrows Reach Business Center, Unit # 500,  
 6102 North 9th Street, Tacoma, WA 98406  
 Tel: (253) 564-0217 & Fax : (253) 564-0237  
[www.garwareropes.com](http://www.garwareropes.com)

Product Code: RPP3USS

# PP 3-Strand Ropes



Nominal Size			Weight		Tensile Strength
Dia., inches	Dia., mm	Circ., inches	Lbs./100 Ft.	Lbs./600 Ft.	Lbs.
3/16"	4	1/2"	0.48	2.9	616
1/4"	6	3/4"	1.14	6.8	1,320
5/16"	8	1"	2.01	12.1	2,332
3/8"	9	1 1/8"	2.48	14.9	2,816
7/16"	11	1 1/4"	3.69	22.1	4,114
1/2"	12	1 1/2"	4.43	26.6	4,840
9/16"	14	1 3/4"	6.11	36.6	6,710
5/8"	16	2"	7.79	46.7	8,294
3/4"	18	2 1/4"	9.93	59.6	10,560
13/16"	20	2 1/2"	12.21	73.3	12,760
7/8"	22	2 3/4"	14.77	88.6	15,312
1"	24	3"	17.45	104.7	17,886
1 1/16"	26	3 1/4"	20.47	122.8	20,680
1 1/8"	28	3 1/2"	23.83	143.0	23,540
1 1/4"	30	3 3/4"	27.18	163.1	26,840
1 5/16"	32	4"	30.87	185.2	29,590
1 1/2"	36	4 1/2"	39.26	235.6	37,180
1 5/8"	40	5"	48.32	289.9	45,100
1 3/4"	44	5 1/2"	59.06	354.4	54,120
2"	48	6"	69.80	418.8	62,700
2 1/8"	52	6 1/2"	81.88	491.3	72,600

Product Name: PP Yellow Rope, 3 Strands with 2 green tracers.  
Code: MPP3  
Features: General purpose rope.

Economical neutral buoyancy rope with a combination of good abrasion and elongation factors

## Insist on Garware quality!



**Garware-Wall Ropes Ltd**  
Narrows Reach Business Center, Unit # 500,  
6102 North 9th Street, Tacoma, WA 98406  
Tel: (253) 564-0217 & Fax : (253) 564-0237  
[www.garwareropes.com](http://www.garwareropes.com)



# Nylon 3-Strand Ropes



Nominal Size			Weight		Tensile Strength
Dia., inches	Dia., mm	Circ., inches	Lbs./100 Ft.	Lbs./600 Ft.	Lbs.
¼"	6	¾"	1.6	9	1,486
5/16"	8	1"	2.4	15	2,295
3/8"	9	1 1/8"	3.5	21	3,240
7/16"	11	1 ¼"	4.8	29	4,320
½"	12	1 ½"	6.3	38	5,670
9/16"	14	1 ¾"	8.0	48	7,200
5/8"	16	2"	9.9	59	8,910
¾"	18	2 ¼"	14.3	86	12,780
13/16"	20	2 ½"	17.7	106	15,788
7/8"	22	2 ¾"	19.5	117	17,280
1"	24	3"	25.3	152	22,230
1 1/16"	26	3 ¼"	28.7	172	25,200
1 1/8"	28	3 ½"	32.1	193	28,260
1 ¼"	30	3 ¾"	39.7	238	34,830
1 5/16"	32	4"	43.6	262	38,250
1 ½"	36	4 ½"	56.9	341	48,600
1 5/8"	40	5"	67.2	403	57,375
1 ¾"	44	5 ½"	77.9	468	66,150
2"	48	6"	99.9	599	84,600
2 1/8"	52	6 ½"	112.9	677	95,400

For great elongation and shock absorption.  
Anchor tie up and tow line

## Insist on Garware quality!



**Garware-Wall Ropes Ltd**  
Narrows Reach Business Center, Unit # 500,  
6102 North 9th Street, Tacoma, WA 98406  
Tel: (253) 564-0217 & Fax : (253) 564-0237  
[www.garwareropes.com](http://www.garwareropes.com)

Product Code: RMTR3



# Maxima 3 Strand Trawl Rope MTR3



## Garfil MAXIMA

Produced from blended polymers with a special lay for low weight and high strength.

## Product Features

- Approx. 40% more strength than conventional Polypropylene ropes.
- Special blend of raw materials ensures excellent abrasion resistance.
- Better value for money as compared to conventional ropes.
- Weight to strength ratio is less, facilitating down sizing vis-a-vis PP ropes.
- Unaffected by acids and alkalies.

3 Strand Maxima Trawl Ropes MTR3					
Nominal Size			Weight		Tensile Strength
Dia., inches	Dia., mm	Circ., inches	Lbs./100 Ft.	Lbs./600 Ft.	Lbs.
1/4"	6	3/4"	1.08	6.5	1,606
5/16"	8	1"	2.01	12.1	2,750
3/8"	9	1 1/8"	2.48	14.9	3,520
7/16"	11	1 1/4"	3.69	22.1	5,280
1/2"	12	1 1/2"	4.43	26.6	5,720
9/16"	14	1 3/4"	6.11	36.6	8,030
5/8"	16	2"	7.65	45.9	9,680
3/4"	18	2 1/4"	9.93	59.6	11,880
13/16"	20	2 1/2"	12.21	73.3	14,520
7/8"	22	2 3/4"	14.77	88.6	17,600
1"	24	3"	17.45	104.7	20,240
1 1/16"	26	3 1/4"	20.47	122.8	23,100
1 1/8"	28	3 1/2"	23.83	143.0	27,060
1 1/4"	30	3 3/4"	27.18	163.1	31,460
1 5/16"	32	4"	30.87	185.2	35,200
1 3/8"	34	4 1/4"	34.90	209.4	39,600
1 1/2"	36	4 1/2"	39.26	235.6	44,000
1 5/8"	40	5"	48.32	289.9	52,800
1 3/4"	44	5 1/2"	59.06	354.4	63,800
1 7/8"	46	5 3/4"	64.43	386.6	68,640
2"	48	6"	69.80	418.8	73,700
2 1/8"	52	6 1/2"	81.88	491.3	84,700

Product Name: Maxima 3 Strand Trawl Ropes  
 Product Code: MTR3  
 Features: Lower elongation than regular lay ropes. Excellent combination of strength & abrasion resistance. Floating line  
 Uses: Rib Lines, Cod end frame lines, large front end meshes for Pelagic nets, frame ropes for small tawls.

## Insist on Garware quality!



**Garware-Wall Ropes Ltd**  
 Narrows Reach Business Center, Unit # 500,  
 6102 North 9th Street, Tacoma, WA 98406  
 Tel: (253) 564-0217 & Fax : (253) 564-0237  
[www.garwareropes.com](http://www.garwareropes.com)

# Product Code: RMAXILON



# Maxilon Braided, PE Coat- ed Trawl Ropes



Specification Sheet for GWRL PE/PA Ropes (Maxilon)						
Without Lead Constructions						
Diameter in MM	7	9	11	13	15	17
Material Composition	PE+PA	PE+PA	PE+PA	PE+PA	PE+PA	PE+PA
Colors	As per Customer Requirements					
Linear density Gm/mtr	46.51	57.80	66.67	81.97	133.33	169.49
Runnage Mtr/kg	21.5	17.3	15	12.2	7.5	5.9
Runnage Ft/lb	32.0	25.7	22.3	18.2	11.2	8.8
Min. Breaking Strength (Kgf)	1260	1500	1700	1940	2400	2700
Min. Breaking Strength (LBS)	2778	3307	3748	4277	5291	5952
Coil Wt. 220 mtr. (Kg)	10.2	12.7	14.7	18.0	29.3	37.3
Min Elongation at Break	40.0	35.0	35.0	30.0	25.0	25.0
Boiling Water Shrinkage	4-6%	4-6%	4-6%	4-6%	4-6%	4-6%
With 15% Lead Content						
Diameter	7	9	11	13	15	17
Material Composition	PE+PA+Pb	PE+PA+Pb	PE+PA+Pb	PE+PA+Pb	PE+PA+Pb	PE+PA+Pb
Colors	As per Customer Requirements					
Linear density Gm/mtr	54.72	68.00	78.43	96.43	156.86	199.40
Runnage Mtr/kg	18.28	14.71	12.75	10.37	6.45	5.00
Runnage Ft/lb	27.2	21.9	19.0	15.4	9.6	7.4
Min. Breaking Strength (Kgf)	1260	1500	1700	1940	2400	2700
Min. Breaking Strength (LBS)	2778	3307	3748	4277	5291	5952
Coil Wt. 220 mtr. (Kg)	12.0	15.0	17.3	21.2	34.5	43.9
Min Elongation at Break	40.0	35.0	35.0	30.0	25.0	25.0
Boiling Water Shrinkage	4-6%	4-6%	4-6%	4-6%	4-6%	4-6%
With 30% Lead Content						
Diameter	7	9	11	13	15	17
Material Composition	PE+PA+Pb	PE+PA+Pb	PE+PA+Pb	PE+PA+Pb	PE+PA+Pb	PE+PA+Pb
Colors	As per Customer Requirements					
Linear density Gm/mtr	66.4	82.6	95.2	117.1	190.5	242.1
Runnage Mtr/kg	15.05	12.11	10.50	8.54	5.26	4.17
Runnage Ft/lb	22.4	18.0	15.6	12.7	7.8	6.2
Min. Breaking Strength (Kgf)	1260	1500	1700	1940	2400	2700
Min. Breaking Strength (lbf)	2778	3307	3748	4277	5291	5952
Coil Wt. 220 mtr. (Kg)	14.6	18.2	21.0	25.8	41.9	53.3
Min Elongation at Break	40.0	35.0	35.0	30.0	25.0	25.0
Boiling Water Shrinkage	4-6%	4-6%	4-6%	4-6%	4-6%	4-6%

Product Name: Garware Maxilon Trawl Ropes

Code: Maxilon

Product Info: Helps stabilize mesh size  
Low shrinkage on its own line.  
Allows for low tangle, easy to set nets.

Uses: Front end of a pelagic trawl.

## Insist on Garware quality!



**Garware-Wall Ropes Ltd**  
Narrows Reach Business Center, Unit # 500,  
6102 North 9th Street, Tacoma, WA 98406  
Tel: (253) 564-0217 & Fax : (253) 564-0237  
www.garwareropes.com

Product Code: RMAXILON

# Maxilon Braided, PE Coated Trawl Ropes



Specification Sheet for GWRL PE/PA Ropes (Maxilon)						
Without Lead Constructions						
Diameter in MM	7	9	11	13	15	17
Material Composition	PE+PA	PE+PA	PE+PA	PE+PA	PE+PA	PE+PA
Colors	As per Customer Requiements					
Linear density Gm/mtr	46.51	57.80	66.67	81.97	133.33	169.49
Runnage Mtr/kg	21.5	17.3	15	12.2	7.5	5.9
Runnage F/lb	32.0	25.7	22.3	18.2	11.2	8.8
Min. Breaking Strength (Kgf)	1260	1500	1700	1940	2400	2700
Min. Breaking Strength (LBS)	2778	3307	3748	4277	5291	5952
Coil Wt. 220 mtr. (Kg)	10.2	12.7	14.7	18.0	29.3	37.3
Min Elongation at Break	40.0	35.0	35.0	30.0	25.0	25.0
Boiling Water Shrinkage	4-6%	4-6%	4-6%	4-6%	4-6%	4-6%



Product Name: Garware Maxilon Trawl Ropes

Code: Maxilon

Product Info: Helps stabilize mesh size  
Low shrinkage on its own line.  
Allows for low tangle, easy to set nets.

Uses: Front end of a pelagic trawl.

## Insist on Garware quality!



**Garware-Wall Ropes Ltd**  
Narrows Reach Business Center, Unit # 500,  
6102 North 9th Street, Tacoma, WA 98406  
Tel: (253) 564-0217 & Fax : (253) 564-0237  
[www.garwareropes.com](http://www.garwareropes.com)



**Maxilon Braided, PE Coated Trawl Ropes (page 2)**

With 15% Lead Content						
Diameter	7	9	11	13	15	17
Material Composition	PE+PA+Pb	PE+PA+Pb	PE+PA+Pb	PE+PA+Pb	PE+PA+Pb	PE+PA+Pb
Colors	As per Customer Requiements					
Linear density Gm/mtr	54.72	68.00	78.43	96.43	156.86	199.40
Runnage Mtr/kg	18.28	14.71	12.75	10.37	6.45	5.00
Runnage Ft/lb	27.2	21.9	19.0	15.4	9.6	7.4
Min. Breaking Strength (Kgf)	1260	1500	1700	1940	2400	2700
Min. Breaking Strength (LBS)	2778	3307	3748	4277	5291	5952
Coil Wt. 220 mtr. (Kg)	12.0	15.0	17.3	21.2	34.5	43.9
Min Elongation at Break	40.0	35.0	35.0	30.0	25.0	25.0
Boiling Water Shrinkage	4-6%	4-6%	4-6%	4-6%	4-6%	4-6%
With 30% Lead Content						
Diameter	7	9	11	13	15	17
Material Composition	PE+PA+Pb	PE+PA+Pb	PE+PA+Pb	PE+PA+Pb	PE+PA+Pb	PE+PA+Pb
Colors	As per Customer Requiements					
Linear density Gm/mtr	66.4	82.6	95.2	117.1	190.5	242.1
Runnage Mtr/kg	15.05	12.11	10.50	8.54	5.26	4.17
Runnage Ft/lb	22.4	18.0	15.6	12.7	7.8	6.2
Min. Breaking Strength (Kgf)	1260	1500	1700	1940	2400	2700
Min. Breaking Strength (lbf)	2778	3307	3748	4277	5291	5952
Coil Wt. 220 mtr. (Kg)	14.6	18.2	21.0	25.8	41.9	53.3
Min Elongation at Break	40.0	35.0	35.0	30.0	25.0	25.0
Boiling Water Shrinkage	4-6%	4-6%	4-6%	4-6%	4-6%	4-6%

**Insist on Garware quality!**



**Garware-Wall Ropes Ltd**  
 Narrows Reach Business Center, Unit # 500,  
 6102 North 9th Street, Tacoma, WA 98406  
 Tel: (253) 564-0217 & Fax : (253) 564-0237  
[www.garwareropes.com](http://www.garwareropes.com)

Product Code: RMBR8

# MBR8 Maxima 8 Strand



## Garfil MAXIMA

Produced from blended polymers with a special lay for low weight and high strength.

## Product Features

- Approx. 40% more strength than conventional Polypropylene ropes.
- Special blend of raw materials ensures excellent abrasion resistance.
- Better value for money as compared to conventional ropes.
- Weight to strength ratio is low, facilitating down sizing vis-a-vis PP ropes.
- Unaffected by acids and alkalis.

	DIAMETER		WEIGHT			STRENGTH	
	Inch	mm	ft/lb	m/kg	lbs/100ft	lbs	kg
8 Carr	1/4"	6	81.83	55	1.22	1540	700
	5/16"	8	55.05	37	1.82	2205	1000
	3/8"	9	38.68	26	2.59	3086	1400
	7/16"	11	26.78	18	3.73	4189	1900
	1/2"	12	21.28	14.3	4.70	5952	2700
12 Carr	9/16"	14					
	5/8"	16					
	3/4"	18					
	7/8"	21					

\* Denotes Different Construction



1/4" comes in this construction.

Product Name: Maxima 8 Strand  
 Code: MBR8  
 Features: Easy spliceability, floating line, commonly used for front end meshes on trawls, Seine ring bridles, corkline for small gillnets.

## Insist on Garware quality!



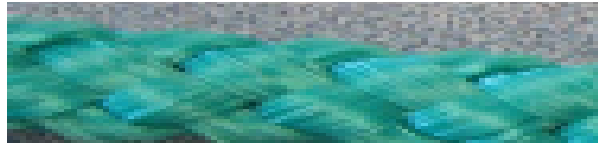
**Garware-Wall Ropes Ltd**  
 Narrows Reach Business Center, Unit # 500,  
 6102 North 9th Street, Tacoma, WA 98406  
 Tel: (253) 564-0217 & Fax : (253) 564-0237  
[www.garwareropes.com](http://www.garwareropes.com)

Product Code: RHBPP

# Hollow Braid PP



8 strand, easily spliceable floating rope used in a variety of applications.



Runnage	Diameter	Reel Size
#58 (.0067lb/ft)	3/16"	600'
		660'
		1320'
		1980'
		600'
#58S (.0111lb/ft)	1/4"	660'
		1320'
		1980'
		600'
#59 (.0161lb/ft)	5/16"	600'
		660'
		1320'
		1800'
		1980'
9mm (.0233lb/ft)	3/8"	600'
		1800'
12mm (.044lb/ft)	1/2"	600'
16mm (.067lb/ft)	5/8"	600'

## Insist on Garware quality!



**Garware-Wall Ropes Ltd**  
Narrows Reach Business Center, Unit # 500,  
6102 North 9th Street, Tacoma, WA 98406  
Tel: (253) 564-0217 & Fax : (253) 564-0237  
[www.garwareropes.com](http://www.garwareropes.com)



# Crab Rope

## 3-Strand Crab Rope

Made with Garware Maxima fiber.

Product Name: 3-Strand Crab Rope

Features: Easy to handle (coil and uncoil). Balanced rope. Good splicability.

Uses: Floating crab pot ropes



Our new crab rope is a HIGH QUALITY product, designed carefully to compete with the higher end products on the market.

<u>Diameter</u>	<u>Length</u>	<u>Avg Weight (lbs)</u>	<u>Strength</u>
3/8"	1200 ft	43 lbs	2,900 lbs
7/16"	1200 ft	56 lbs	3,600 lbs
1/2"	1200 ft	76 lbs	4,800 lbs

## Insist on Garware quality!



**Garware-Wall Ropes Ltd**  
Narrows Reach Business Center, Unit # 500,  
6102 North 9th Street, Tacoma, WA 98406  
Tel: (253) 564-0217 & Fax : (253) 564-0237  
[www.garwareropes.com](http://www.garwareropes.com)

Product Code: RAAL



# Chaffing Ropes (Anti-Abrasion Loops)



Pre cut or continuous length first grade polyethylene.

Available in 7 foot, 9 foot, and continuous lengths.

## Insist on Garware quality!



**Garware-Wall Ropes Ltd**  
Narrows Reach Business Center, Unit # 500,  
6102 North 9th Street, Tacoma, WA 98406  
Tel: (253) 564-0217 & Fax : (253) 564-0237  
[www.garwareropes.com](http://www.garwareropes.com)



# Gangions



Gangions					
White braided nylon abrasion resistant cover over a fiber core for strength. Special coatings available as an option providing color and additional abrasion resistance. Traditional construction, superb quality!					
	Size	Pkg	Ft/lb	Brk. str./ lb.	
	60	2 lb	300	200	
	72	2 lb	210	300	
	72	5 lb	210	300	

White, Green and Orange colors.

**NEW High Visibility Orange** color option for safety on deck during haul-in and baiting.

Strong, abrasion resistant construction.

Pre-tied versions possible.

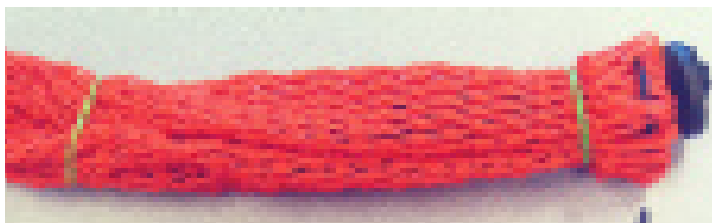
## Insist on Garware quality!



**Garware-Wall Ropes Ltd**  
 Narrows Reach Business Center, Unit # 500,  
 6102 North 9th Street, Tacoma, WA 98406  
 Tel: (253) 564-0217 & Fax : (253) 564-0237  
[www.garwareropes.com](http://www.garwareropes.com)

Product Code: FBB

# Bait Bags



Garware bait bags are made of knotted, twisted Orange #18 PE netting.

We carry 3 sizes, 6", 12" and 14" long.

Commonly used for the past four years in the Alaska crab fishery, these bags are robust and ready to go.

The tie cord is a strong #60 dyed black.

Bags are packed in bales of 200 units.

Can be made to your own specs.

## Insist on Garware quality!



**Garware-Wall Ropes Ltd**  
Narrows Reach Business Center, Unit # 500,  
6102 North 9th Street, Tacoma, WA 98406  
Tel: (253) 564-0217 & Fax : (253) 564-0237  
[www.garwareropes.com](http://www.garwareropes.com)

## Product Code: EVA (Ethyl Vinyl Acetate) FLOATS



# Floats

Type	Buoyancy	Wt/float	size of float		Carton Size		
	lbs	lbs	(L x W x H) mm	pcs/crtn	mm	ctn/ container	pcs/ container
EF-3	0.694575	0.1323	105 x 72 x 20	200	570x460x450	240	48000
EF4.5	0.99	0.16	120 x 85 x 18	200		176	35200
EF-6	1.38915	0.25578	147 x 94 x 20	150	570x550x575	160	24000
EF-10	2.1168	0.385875	170 x 110 x 22	80	570x510x575	176	14080
EF-15	3.087	0.4851	165 x 116 x 25	75	570x500x575	176	13200
SK-20	4.4	0.587	170 x 130 x 30	40	570x360x700	200	8000
EF-24	5.292	0.77175	178 x 150 x 30	40	580x317x750	180	7200
EF-30	6.615	0.981225	188 x 165 x 33	36	580x640x490	155	5580
EF-50	11.025	1.74195	225 x 205 x 45	16	860x450x450	162	2592
EF-70	15.435	2.1609	250 x 220 x 45	18	680x460x740	120	2160
EF-90	20.286	3.1311	262 x 253 x 48	18	550x750x500	132	2376

## Insist on Garware quality!



**Garware-Wall Ropes Ltd**  
 Narrows Reach Business Center, Unit # 500,  
 6102 North 9th Street, Tacoma, WA 98406  
 Tel: (253) 564-0217 & Fax : (253) 564-0237  
[www.garwareropes.com](http://www.garwareropes.com)

Product Code: RMPL12

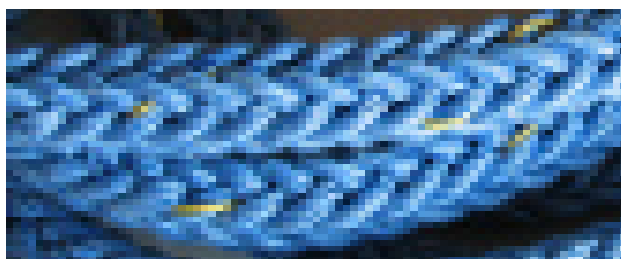


# Maxima 12 Strand

## MPL12, MPLC12 & MPLC12C

### MPL12

MPL12 is the easiest to splice of these three. It is the regular lay 12 strand all purpose floating line. General uses include: Pursline, bridles, gillnet tows.



### MPLC12

MPLC12 is a compact, tighter braid than MPL12 to increase abrasion resistance which is important for purselines.

## Insist on Garware quality!



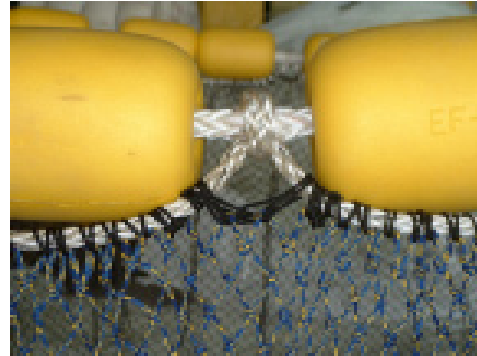
**Garware-Wall Ropes Ltd**  
Narrows Reach Business Center, Unit # 500,  
6102 North 9th Street, Tacoma, WA 98406  
Tel: (253) 564-0217 & Fax : (253) 564-0237  
[www.garwareropes.com](http://www.garwareropes.com)

# Seine Corkline and Leadline



## Seine Corkline

Compact Braided Nylon Construction,  
as per the industry standard.



## Maxibraid 12 Strand Polyester Corkline

Shown here with Maxiblend  
hangings.

## Save Time Save Money!

Garware Corklines and leadlines are available pre-hung to customer specifications. This greatly reduces the expense normally incurred with the hanging of corklines and leadlines.

## Garware Seine Leadline

Triple Jacket Polyester construction over a lead bead core. Designed for strength and excellent flexibility.



## Insist on Garware quality!

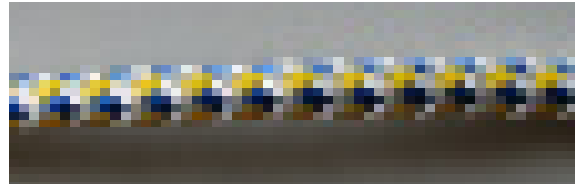


**Garware-Wall Ropes Ltd**  
Narrows Reach Business Center, Unit # 500,  
6102 North 9th Street, Tacoma, WA 98406  
Tel: (253) 564-0217 & Fax : (253) 564-0237  
[www.garwareropes.com](http://www.garwareropes.com)



## Gillnet Leadlines and Corklines.

Gillnet Corkline



Gillnet Leadline

### Insist on Garware quality!



**Garware-Wall Ropes Ltd**  
Narrows Reach Business Center, Unit # 500,  
6102 North 9th Street, Tacoma, WA 98406  
Tel: (253) 564-0217 & Fax : (253) 564-0237  
[www.garwareropes.com](http://www.garwareropes.com)